

REACH Assessments™ Checklist



FOR SCHOOL COORDINATORS

Use this document to complete all tasks in each of the steps when running REACH.



Getting started

Communicate

Prepare for testing

Sit the tests

Review results

1 Getting started





2 Communicate

3 Prepare for testing

4 Sit the tests

5 Review results

This checklist is for implementing **Reach Assessments** in your school. It includes step-by-step guidance on what to do and when to do it. It also outlines the resources available to you. Go to the **Get Started** section of the [Reach support page](#) for all the relevant documents for this step.

Step 1 – Getting started	Recommended timing	✓
1.1 Agree on school coordinator(s) for the assessments.	1-2 months before test date	<input type="checkbox"/>
1.2 Get familiar with the product support page .	1-2 months before test date	<input type="checkbox"/>
1.3 Download the User guide  . This document provides very detailed instructions if you need additional help with the steps in this guide.	1-2 months before test date	<input type="checkbox"/>
<p>Check ICAS Assessments has the correct details for your school.</p> <p>IMPORTANT: We use the school's administration email address for school purchase order confirmations, account activations for the Assessments Portal and result release notifications. You can check your school's details in the account section of the Shop. Contact customer service to get updates made.</p> <p>If your school is in a country which does not have access to the online shop, contact your local ICAS Assessments representative.</p>	Early in the school year so all notifications are correctly received	<input type="checkbox"/>
1.5 Meet with your school's IT Support early to confirm that your school meets the technical requirements for the online tests.	Before ordering	<input type="checkbox"/>
1.6 Confirm which Reach Assessments your school will do and put test date(s) in the school calendar.	Before ordering	<input type="checkbox"/>
<p>Order before the closing dates for each subject.</p> <p>Submit your order through the Shop using your school code and password. If you are in a country that does not have access to the online shop contact your local ICAS representative for ordering.</p> <p>Order confirmations are sent to the school's administration email address on file with ICAS Assessments.¹</p>	Order as early in the school year as possible to allow plenty of time for preparation.	<input type="checkbox"/>
1.8 Submit  Accessibility options enquiry form if needed.	8 weeks before test date	<input type="checkbox"/>

¹ New schools must [register](#) with ICAS Assessments before they can purchase and sit assessments.



Go to the **Communicate** section of the [Reach support page](#) for all the relevant documents for this step.

Step 2 – Communicate	Recommended timing	<input checked="" type="checkbox"/>
<p>2.1 Advise parents/carers about the assessments using the School to Parents Communications Template. A school must issue a written data and privacy statement to the student’s parent or carer if they are to sit an assessment.</p>	<p>1-2 months before test date or as part of the school’s parent permission process</p>	<input type="checkbox"/>
<p>2.2 BYOD schools only Share locked-down browser installation instructions with parents, carers and students using the letter template provided (applies to Spelling and Writing).</p>	<p>1-2 months before test date</p>	<input type="checkbox"/>

1
Getting started

2
Communicate

3

Prepare for testing



4
Sit the tests

5
Review results

Go to the **Prepare for Testing** section of the [Reach support page](#) for all the relevant documents for this step.

To sit the online assessments your school will need access to the **Assessments Portal**. Shortly after your first order, an account activation email will be sent to your school's nominated school administration email address. If needed you can request for an additional email address to be used for account activation. Contact Customer Service at icasassessments@janison.com.au.

Step 3 – Prepare for testing

Recommended timing



3.1 Preparation for School Coordinators

- + First-time users — activate your account for the **Assessments Portal**.
 - Activate your account by **clicking the link** in the activation email sent.
 - **Set your password** (your username is your email address).
 - Login at icasassessments.com/assessments-portal
Note: The short URL for the Assessments Portal is icas.site/start.

As soon as you receive the activation email



3.2 Preparation to set up Teachers

- + First-time users — invite teachers (as needed) to access the Assessments Portal so they can assist in supervising the tests on the day.
- + Click on the **Staff** icon, and click **Invite staff**. Select **Unrestricted teacher**² role and enter the relevant staff **email addresses**. Click **Send invitations**. The teachers will receive an email to activate their accounts. Remind staff to check they can login in advance of the test dates.
- + Previous year's customers — update staff (as needed) already in the Assessments Portal. Go to the **Staff** icon and click **Manage staff**. Click on **Staff name** to edit their record.
- + Remind teachers about the test dates.

1-2 months before test date



² An unrestricted teacher has access to all classes and therefore does not need to be assigned a class.

1
Getting started

2
Communicate

3

Prepare for testing



4
Sit the tests

5
Review results

Step 3 – Prepare for testing

Recommended timing



3.3

Preparation to set up students

- + Import students into the **Assessments Portal**.
 - Click on **Student** icon and select **Import students**.
 - Click **Download template** to download an Excel template and complete each column with your students' details (first name, last name, date of birth and year level are mandatory fields).
 - Year level: For Australia, New Zealand and most other countries only put the numeric value, e.g. 7. There are exceptions to this for some countries which need to include a prefix before the numeric value. Only values in the Year Equivalence Table are accepted in this field. consult the Reach Assessments Test Supervision Instructions or the comprehensive User Guide
 - For date of birth Microsoft Excel date format (or equivalent) or text values using the following formats are accepted: dd-mm-yyyy; dd-mm-yy; dd-mmm-yyyy; dd-mmm-yy; dd-mmmm-yyyy; dd-mmmm-yy; yyyy-mm-dd; yyyy-mmm-dd; yyyy-mmmm-dd. A / separator can be used instead of a - separator. Examples include 07/11/2020, 23-Mar-20, 23-December-2020.
 - Save the file to your computer, then click **Upload file**, choose the file you just saved.
 - Click **Start**. Preview the upload and click **Start**. A successful import message will appear on the screen and be sent to your email.
- + Allocate test licences.
 - Click the **Student** icon and click **Allocate test licences**.
 - Use the drop down lists to filter to the required test.
 - Go to **Actions** column. Click on the three dots.
 - Click **Edit**.
 - Click on the checkbox next to each student's name to allocate a licence.
 - Click **Save**.
- + Print student logins. This can only be done after test licences have been allocated.
 - Click **Print student logins**³ from your dashboard.
 - Filter your selection using the drop downs to obtain the required one-time codes.
 - A PDF document called "One-time codes" will open in a new browser.
 - Click **Print**.
- + Remind students about the test dates.

At least **1 month** before your first test date

Test licence allocation will be available 8 weeks prior to each subject's test sitting period.

³ This can only be done after test licences have been allocated.

1
Getting started

2
Communicate

3

Prepare for testing



4
Sit the tests

5
Review results

Step 3 – Prepare for testing

Recommended timing



3.4

Preparation to set up devices

- + Read all **technical requirements** and seek assistance from your IT support.
- + Install the locked-down browser (only for Spelling and Writing). See Communicate section for parent instructions for BYODs.
- + **Spelling** only: check all students have headsets.
- + Conduct a **technical readiness check** on all devices. For Spelling and Writing this should be done after the locked-down browser installation.

3-4 weeks before the test date

3.5

Preparation to set up space

- + Book hall/rooms as needed.
- + Check the rooms have the appropriate Wifi access.

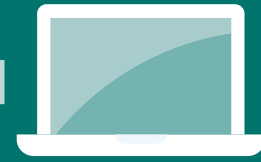
2 weeks before the test date or as required by your school

1
Getting started

2
Communicate

3
Prepare for testing

4
Sit the tests



5
Review results

Go to the **Sit the Test** section of the [Reach support page](#) for all the relevant documents for this step.

Step 4 – Sit the tests	Recommended timing	<input checked="" type="checkbox"/>
<p>4.1 Download the Test Supervision Instructions ↓ which include everything needed to start, supervise and troubleshoot a live test and share with supervising teachers.</p> <p>Give the printed student logins (one-time codes) to the relevant supervising teacher(s) so they can be distributed to the students on test day.</p>	1-2 weeks before test day	<input type="checkbox"/>
<p>4.2 Each supervising teacher MUST login to the Assessments Portal to start and supervise the test.</p> <p>Go to icasassessments.com/assessments-portal</p> <p>Note: The short URL for the Assessments Portal is icas.site/start</p>	On test day	<input type="checkbox"/>
<p>4.3 Administer the assessment under normal exam conditions.</p>	On test day	<input type="checkbox"/>

1
Getting started

2
Communicate

3
Prepare for testing

4
Sit the tests

5
Review results



Go to the **Review results** section of the [Reach support page](#) for all the relevant documents for this step.

Step 5 – Review results	Recommended timing	<input checked="" type="checkbox"/>
<p>5.1 View results in the school section of the Results Portal. Principals and the school's administration receive a notification email when results are released.</p>	<p>Results are released mid-way and at the end of the test sitting window. Reach Writing is the exception which is released 4–6 weeks after the sitting window closes</p>	<input type="checkbox"/>
<p>5.2 Print and distribute the student handouts containing the Student TAP-ID and PIN (as required) so students can access their own results and certificates in the student section of the Results Portal.</p>	<p>Results are released to the Student Portal at the same time as the School Portal</p>	<input type="checkbox"/>
<p>5.3 Print and organise presentation/distribution of certificates as required.</p>	<p>As required by your school</p>	<input type="checkbox"/>
<p>5.4 Schedule results review meeting with relevant staff.</p>	<p>As required by your school</p>	<input type="checkbox"/>